

WHAT'S
BLUE
ON TOP ...

... YELLOW
ON THE
BOTTOM ...

... AND 3 WAYS
BETTER TERMITE
PROTECTION?

TRITHOR for Power³



1 It's a barrier
2 It repels
3 It kills



\$100,000
50 YEAR*
Termite Damage
WARRANTY

TRITHOR

*Subject to Annual Inspection. Refer to the warranty document for complete details.

1 Trithor is **A PHYSICAL TERMITE BARRIER** that protects your property by preventing the entry of termites. This is because termites can't get through the unique weave of the fibrous blanket incorporated within Trithor...

2 And Trithor contains crystals of a highly potent termite control agent that **REPELS** termites, driving them away from your property.

3 Plus the active ingredient in Trithor **KILLS** termites fast, so any particularly tough termite that might actually penetrate into the Trithor membrane is quickly eliminated before it has any chance of entering your property.

Compliance

Trithor Termite Protection meets the performance criteria of section 1 Clause 1.3, of AS 3660 Termite management Part 1, New building work and was tested in accord to AS 3660 Termite management Part 3 Assessment criteria for termite management systems.

Trithor Termite Protection also meets the performance requirements P2.1 & P2.1.1 as an alternate solution under BCA 2006, Part 3.1.3: Termite Risk Management (Queensland Variation), refer University of NSW's NewSouth Global Appraisal J069121.

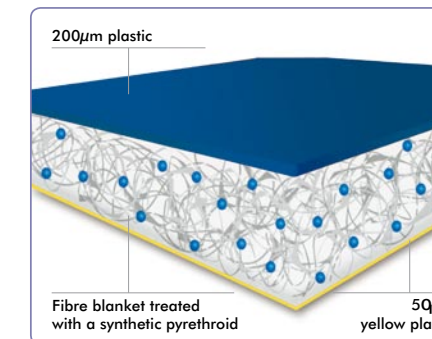
Independent trials, conducted in accordance with the requirements of the Australian Standard AS 3660 Termite management Part 3 Assessment criteria for termite management systems and other tests show that Trithor will remain as an effective termite measure in excess of 50 years.

Trithor Termite Protection has also been independently evaluated and registered by the Australian Pesticides and Veterinary Medicines

Authority (APVMA) for use in the protection of new and existing buildings. This regulatory process involved independent expert analysis by leading government appointed scientists.

How Trithor Works

The control agent in Trithor is deltamethrin, an insecticide that is modelled on natural pyrethrins produced by the Chrysanthemum daisy, nature's own cure for insect problems. Consequently it is low toxic to warm-blooded animals, though deadly to termites and other insects. Better still, deltamethrin both kills and strongly repels termites.



The fibre blanket within Trithor is a truly unique blend of fibres that adds to the durability and effectiveness of Trithor Termite Protection. Trithor has undergone extensive CSIRO evaluation. The non-woven blend of fibres within Trithor, in addition to holding the deltamethrin crystals so they remain ever ready to kill and repel termites, is also structured to prevent termites penetrating.

Trithor is impregnated with deltamethrin and then laminated top and bottom with a rugged plastic membrane. This involves the use of some high-tech machinery and ensures the deltamethrin remains trapped within the blanket ensuring it is non-hazardous to anyone handling the product or who comes into contact with the system.

The top blue plastic layer is thicker (200 microns) and provides an additional benefit by serving as a moisture vapour barrier.

The bottom yellow plastic layer (50 microns) stops soil and grit getting into the fibres of the blanket, prevents the termiticide from leaching into the environment, and ensures it remains locked safely away from any soil organisms.

Repels Termites

Scientific trials have shown that when termites approach Trithor Termite Protection they sense the presence of the deltamethrin. Since deltamethrin works as a powerful repellent it drives the termites away. So, whereas with traditional physical or chemical barrier systems, the termites will try and find a way through, or probe around looking for any gaps in the barrier; with Trithor they are more likely to be driven away from your property.

Proven to Kill Termites

In the unlikely event that any termites should penetrate the bottom plastic layer, they become quickly trapped in the fibre mesh of the Trithor blanket. Once trapped in the fibres it is almost impossible to proceed further. And their struggles to escape only serve to bring them into closer contact with the deadly (to termites) crystals of deltamethrin which rapidly kill them.

High Density Fibre for Better Results

The Trithor blanket has a fibre density of about 200g per square metre. This is more effective and ensures the design cushions the system and prevents it being squashed, even under heavy building loads, or if it gets wet. This gives you 'rigid' protection beneath the weight of your slab to guarantee you maximum effectiveness at all times.

It further ensures that any imperfections in the building structure, which frequently can be 2-3mm or more, are effectively and easily blocked by Trithor Termite Protection.

The polymers used in the formation of the blanket are inedible to termites and, since Trithor also acts as a moisture barrier, it further reduces the attractiveness of a property to termites.

Flexible

Trithor is a flexible system that may be installed in many difficult and complicated situations including multiple penetrations, step downs, etc. Trithor can even be moulded around unusual building designs and is easily cut and joined ensuring you total protection at all times. Trithor is quickly installed and has no sharp edges to affect other tradespeople.

Tough

Trithor is exceptionally tough. A very sharp cutting blade is required to cut the Trithor fabric. Blunt objects, workmen's boots, etc. have no chance of penetrating Trithor. If a hole is accidentally produced it is easily repaired. And the fibres even have self-sealing properties.

Long Lasting

Trithor will remain in place protecting your property for its economic life without the need to repeatedly 'pump-it-up' with additional chemical.

Environmentally Sound

Since the deltamethrin remains safely locked up within the blanket fibres, it does not get into the environment.

Australian Designed for Australian Conditions

Of course Trithor was designed and tested in Australia to suit Australian conditions and to protect against the voracious termites native to Australia.

Health and Safety

Trithor poses minimal risk to the homeowner, construction workers or the environment. It is ideal for use in sensitive environments and in allergy-free housing.

Technical Support

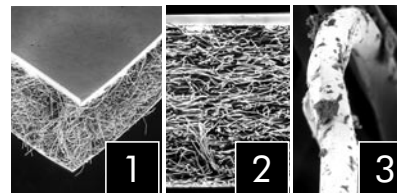
Trithor is supported technically by a team of professionals all with extensive experience in the termite management industry. Trithor is made by Ensystem, a privately owned, international company with many years of specialisation in termite management solutions. Australia is the regional headquarters for Australia and SE Asia and is also the location for one of the company's global research and development facilities. Ensystem Australia's Head Office is located in Sydney with laboratory and manufacturing facilities located in Melbourne. Specialist Technical Support personnel are located in all States.

A Close-up Look

The blanket at 55x magnification showing the complex fibre array in detail.

At 4,000x magnification you can clearly see the deltamethrin crystals adhered to the individual fibres.

1. Blanket magnified 44x showing the complex array of fibres to trap both the termites and the deltamethrin and support the system under the weight of a concrete slab.
2. The blanket at 55x magnification showing the complex fibre array in more detail.
3. At 4,400x magnification you can clearly see the deltamethrin crystals adhered to the individual fibres within the blanket.



Registered Directions for Use

SITUATION	PEST	STATE	RATE	CRITICAL COMMENTS
Domestic, commercial, industrial, and public buildings to form a complete pre-construction treatment providing both termite and moisture protection or as a flexible termite management system that may be used as part of an integrated termite management program.	Subterranean termites.	All States except TAS.	Single sheet thickness is sufficient to form an effective barrier.	<p>Trithor must be installed as a complete and continuous barrier. Any gaps or tears present in the sheet after installation must be repaired as per the General Instructions.</p> <p>For complete under slab sheet installations, installers should select an appropriate width sheet to minimise the number of joins needed to complete the installation.</p> <p>For joining sheets, attaching sheets to surfaces and treatment of penetrations, see General Instructions.</p> <p>For specific details on installation of sheet for full under slab treatments, perimeter treatments, service penetrations, retaining walls and construction joints see General Instructions.</p>

Refer to product label for full details.

Installed by:

Ensystem Australia Pty Ltd
2/47 Day Street North
SILVERWATER NSW 2128

Ph: 13 35 36 Email: info@trithor.com.au



Call 13 35 36
www.trithor.com.au